

Drill - 3 601 AA9 5K0 - GBM 350

www.powertools-aftersaleservice.com



BOSCH

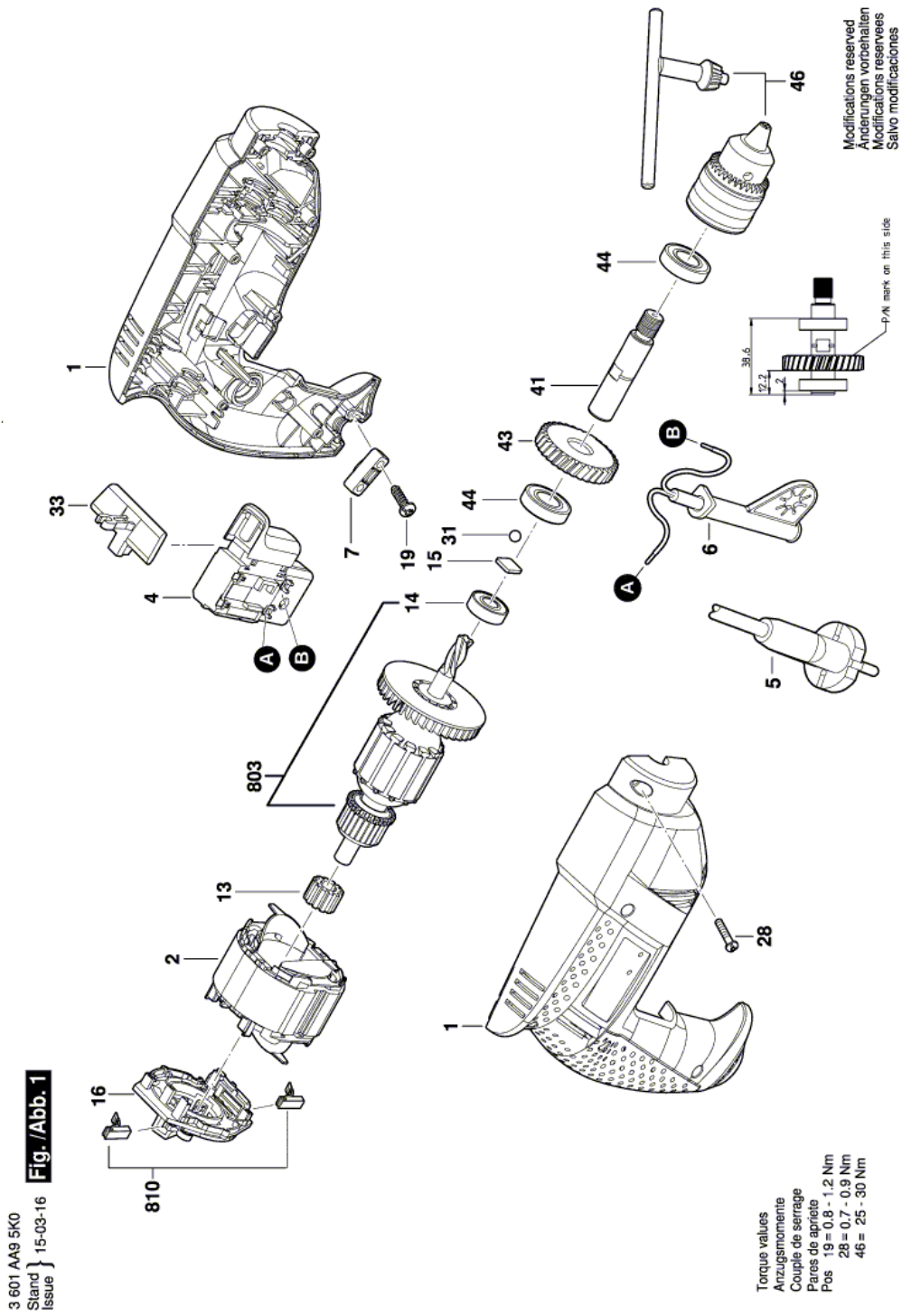
Item	Part Number	Description	Illustration	Price	Quantity	Price Group
1	1 600 A00 58G	Housing Section		1	-,-	1 25
2	1 619 P20 093	Field 220V		1	-,-	1 27
4	2 607 200 623	Switch		1	-,-	1 26
5	1 604 460 265	Power supply cord CEE 2,15m 2 x 1,0mm H05VV-F		1	-,-	1 23
6	2 600 707 059	Grommet Ø6,9 MM		1	-,-	1 13
7	2 601 035 001	Cable Clip		1	-,-	1 11
13	2 600 301 068	Sintered-Metal Bushing		1	-,-	1 11
14	1 619 P06 024	Ball Bearing		1	-,-	1 22
15	2 609 110 019	Pressure Plate		1	-,-	1 11
16	1 619 P20 167	Brush Holder		1	-,-	2 -
19	1 619 P00 228	Screw		1	-,-	2 15
28	1 619 P00 219	Tapping Screw		1	-,-	8 11
31	1 903 230 009	Ball DIN 5401-5 G28		1	-,-	1 10
33	2 609 100 180	Adjusting Slide		1	-,-	1 15
41	1 619 P10 887	Drilling Spindle		1	-,-	2 20
43	1 619 P10 888	Cylindrical Gear		1	-,-	8 20
44	1 619 X07 256	Ball Bearing		1	-,-	2 17
46	1 608 571 079	Key Chuck Ø1,0-10 MM, 3/8"		1	-,-	1 32
803	1 619 P20 085	Armature set 220V		1	-,-	1 28
810	1 619 P20 086	Carbon-Brush Set		1	-,-	1 11

NO Lubrication instructions available for this product

Product information Drill - 3 601 AA9 5K0 - GBM 350

Product No	3 601 AA9 5K0
Description	251.321; Drill
DIN-Text	
ID_Text_Ext	0
Trading_Description	GBM 350
Voltage_1	230 V
ID_Country_Product	ASI

Illustration - Type E



Information subject to change without further notice.