

Angle Grinder - 3 601 C94 0K0 - GWS 750-100

www.powertools-aftersaleservice.com



BOSCH

Item	Part Number	Description	Illustration	Price	Quantity	Price Group
1	1 619 P10 958	Motor Housing	1	-,-	1	19
2	1 619 P08 334	Field 220-240V	1	-,-	1	28
3	1 619 P08 234	Armature 220-240V	1	-,-	1	31
4	1 607 200 238	Switch	1	-,-	1	22
5	1 607 000 387	Power supply cord EU 2,65m 2 x 0,75mm H05VV-F	1	-,-	1	23
6	2 600 703 012	Grommet Ø6,5-Ø6,9x95 MM	1	-,-	1	13
7	1 601 302 017	Fastening Clamp	1	-,-	1	10
12	1 619 P02 827	Suppression Filter	1	-,-	1	18
13	1 619 P00 456	Ball Bearing 7x19x6 MM	1	-,-	1	14
14	1 619 P13 103	Deep-Groove Ball Bearing	1	-,-	1	15
16	1 604 336 035	Brush Holder	1	-,-	2	14
17	1 604 652 013	Spiral Spring	1	-,-	2	11
18	1 619 P11 487	Compression Spring	1	-,-	1	10
22	1 619 P10 967	Adjusting Slide	1	-,-	1	10
23	1 619 P10 969	Switch Button	1	-,-	1	10
25	1 619 P10 963	Housing Cover	1	-,-	1	15
26	1 600 502 023	Intermediate Ring	1	-,-	1	12
27	1 600 206 025	Rubber Ring	1	-,-	1	12
28/1	1 619 P07 440	Ball Bearing	1	-,-	1	19
28/3	2 916 660 013	Spring retaining ring DIN 472-32x1,2 MM	1	-,-	1	11
29	1 619 P10 970	Air-Deflector Ring	1	-,-	1	11
30	1 619 P10 971	Air Distributor	1	-,-	1	11
32	1 603 523 111	Grinding Spindle M10, SW12	1	-,-	1	19
33	1 619 P02 820	O-Ring 44,0x1,0 MM	1	-,-	1	10
35	1 619 P02 821	Shim 0,1 MM	1	-,-	1	10
35	1 619 P02 822	Shim 0,2 MM	1	-,-	1	10
36	1 619 P00 987	Washer	1	-,-	1	10
37	1 600 100 033	Cover Disc	1	-,-	1	13
38	1 619 P02 823	Crown Gear	1	-,-	1	22
39	1 619 P02 825	Bevel Gear	1	-,-	1	17
45	2 915 011 007	Hex Nut DIN 934-M6-8-A	1	-,-	1	10
47	2 609 110 052	Special Screw	1	-,-	1	11
48	1 619 P00 220	Torx Oval-Head Screw 3x10	1	-,-	2	10

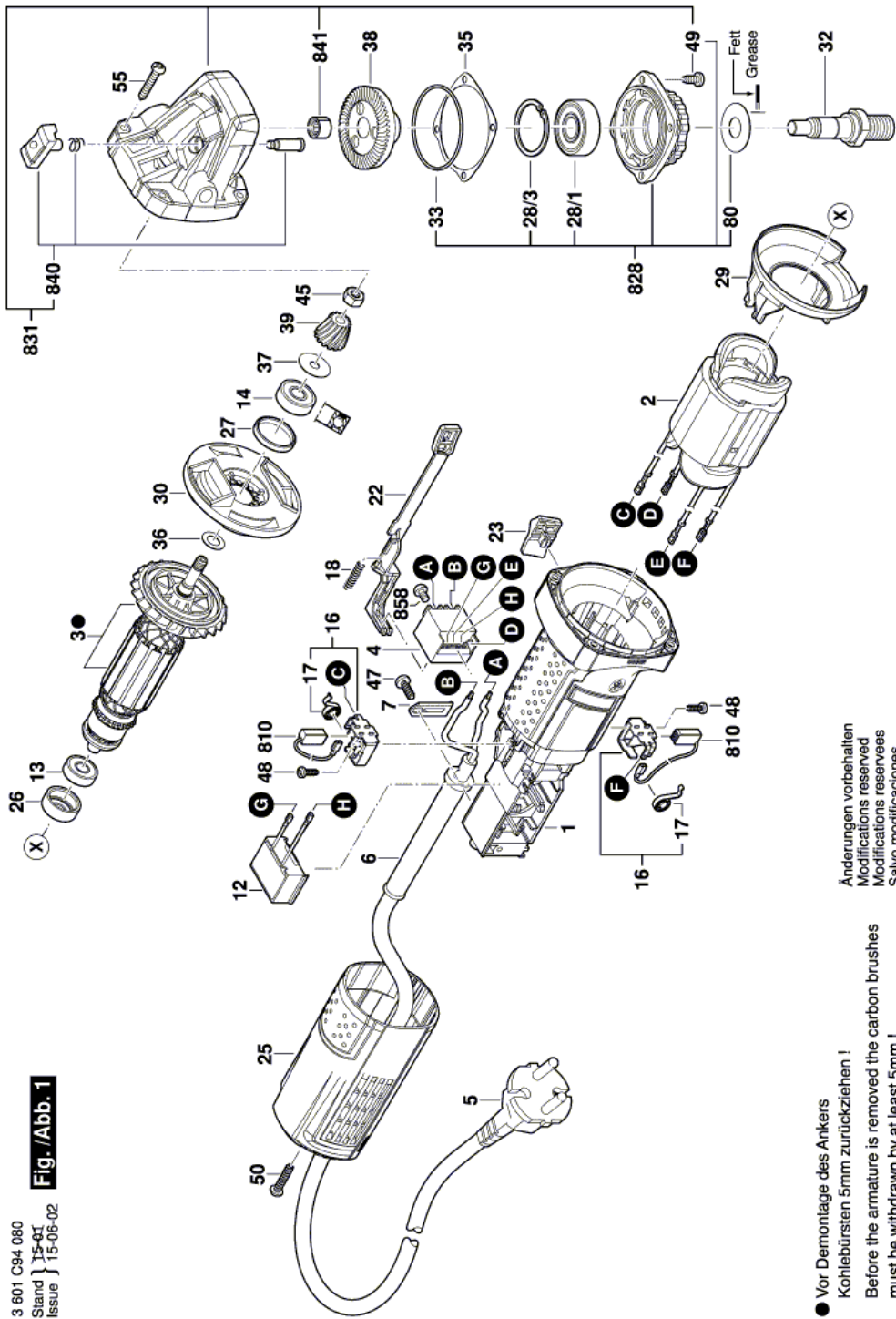
Item	Part Number	Description	Illustration	Price	Quantity	Price Group
49	1 603 435 068	Thread-forming tap. Screw DIN 7500, M4x10, SR10.2	1	-,-	4	11
50	1 619 P00 105	Torx Oval-Head Screw 4x20	1	-,-	1	10
55	1 619 P01 066	Torx Oval-Head Screw 4x25	1	-,-	4	10
80	1 619 P09 390	Cover Disc	1	-,-	1	12
651	1 619 P02 831	Protective Cover Ø100 MM GRAY	2	-,-	1	21
651/10	2 602 025 067	Auxiliary Handle M10, Ø32,5x105 MM	2	-,-	1	15
651/20	1 619 P09 976	Round Nut With 2 Holes	2	-,-	1	12
651/30	1 619 P08 928	Pin-Type Face-Wrench	2	-,-	1	15
651/50	1 605 703 113	Clamping-Flange M10, 16-20 MM	2	-,-	1	11
810	1 619 P11 715	Carbon-Brush Set	1	-,-	1	18
828	1 619 P07 451	Bearing Flange	1	-,-	1	27
831	1 619 P12 186	Gear Housing	1	-,-	1	26
840	1 619 P12 188	Push Button	1	-,-	1	13
841	1 600 200 029	Plain bearing	1	-,-	1	14
858	2 910 641 081	Oval-Head Screw DIN7985-M3,5x5-4.8-H	1	-,-	2	10
894	1 615 430 020	Grease Tube 225 ML	2	-,-	1	29
895	1 605 430 003	Grease Tube 225 ML	2	-,-	1	34

NO Lubrication instructions available for this product

Product information Angle Grinder - 3 601 C94 0K0 - GWS 750-100

Product No	3 601 C94 0K0
Description	251.828; Angle Grinder
DIN-Text	
ID_Text_Ext	0
Trading_Description	GWS 750-100
Voltage_1	230 V
ID_Country_Product	ASI

Illustration - Type E



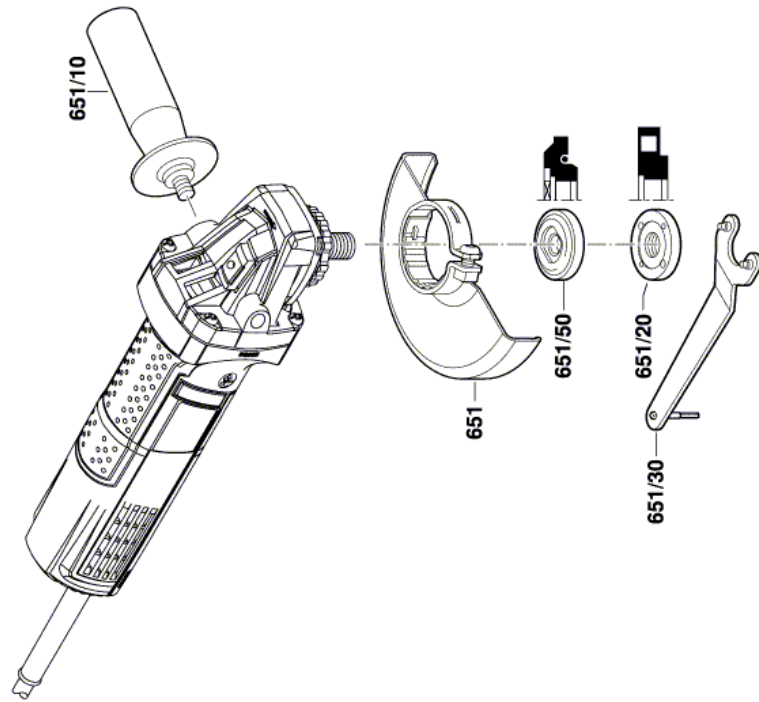
3 601 C94 080
Stand } 15-06-02
Issue }

Fig./Abb. 1

Änderungen vorbehalten
Modifications reserved
Modificacions reserveses
Salvo modificaciones

● Vor Demontage des Ankers
Kohlebürsten 5mm zurückziehen!
Before the armature is removed the carbon brushes
must be withdrawn by at least 5mm !

Illustration - Type E



3 601 C94 080
Stand }
Issue } 15-01-07
Fig./Abb. 2

Änderungen vorbehalten
Modifications reserved
Modificacions reserves
Salvo modificaciones

Information subject to change without further notice.