



Sơ đồ máy GSH 11E

STT	Mã sản phẩm	Tên sản phẩm
1	1 615 108 091	Motor Housing BLUE
2	1 614 220 121	Field 230V .
4	1 617 200 048	Switch .
4/10	2 910 011 088	Socket head cap screw DIN 84-AM3,5x12-5.8 .
6	1 610 703 053	Grommet Ø9,7-Ø12x89 MM .
7	1 601 302 018	Fastening Clamp .
9	1 611 110 889	Manufacturer's nameplate .
13	2 610 909 310	Deep-Groove Ball Bearing .
14	1 610 910 089	Needle-Roller Bearing .
15	1 616 610 083	Fan .
20	1 618 597 068	Toolholder .
21	1 610 508 023	Protective Cap .
22	1 610 591 014	Protection Sleeve .
23	1 610 520 001	Stop Sleeve .
24	1 610 590 006	Spacer Tube .
25	1 612 300 027	Stopping Device .
26	1 610 290 025	Indexing Disk .
28	1 614 621 000	Compression Spring .
31	1 610 290 030	Damping Ring .
35	1 615 806 113	Hammer Pipe .
38	1 615 190 094	Covering hood BLUE
39	1 615 190 096	Covering hood BLUE
41	1 613 124 046	Striker Pin .
43	1 615 808 083	Bearing cover BLUE
45	1 610 290 032	Intermediate Ring .
47	1 611 329 016	Notched Plate .
48	1 616 334 011	Gear Sleeve .
51	1 616 333 031	Crown Gear Z=49 .
53	1 610 190 026	Stop Disc .
54	1 610 190 024	Control Disc .



Sơ đồ máy GSH 11E

56	1 618 700 066	Hammer Piston .
57	1 618 710 066	Striker .
70	1 612 001 034	Connecting Rod .
71	1 613 100 020	Straight Pin .
73	1 615 500 291	Housing Cover .
74	1 612 386 004	Retaining Bracket .
75	1 615 132 083	Handle BLUE
76	1 612 026 057	Clamp Handle BLACK/RED
80	1 617 233 055	Speed governor 220-240V .
81	1 612 026 084	Switch-Pawl BLUE/GREY
82	1 615 510 000	Light Conductor .
84	1 612 025 060	Auxiliary Handle M8 BLACK
85	1 618 040 059	index turning toolholder .
97	1 610 102 032	Supporting Disc 2,0 MM THICK
99	1 610 114 020	Supporting Disc .
102	1 610 102 036	Shim 0,2 MM THICK
103	1 610 290 034	Thrust Ring .
111	3 610 501 500	Bushing .
112	3 613 461 500	Threaded Ring .
113	1 610 009 007	Spacer .
114	1 610 210 139	O-Ring 30,0x2,5 MM .
115	1 610 508 027	Protective Cap BLACK
116	1 610 913 004	Needle-Roller Assembly Ø13 MM .
117	1 610 913 011	Needle-Roller Assembly Ø10 MM .
119	1 610 910 081	Needle-Roller Bearing .
120	1 610 290 037	Inner Ring .
121	1 610 290 035	Bearing Ring .
124	1 610 190 029	Thrust Bearing Disc .
125	1 613 435 010	Torx Oval-Head Screw 5,5x25 .
126	2 910 211 019	Tapping Screw DIN 7971-ST3,9x16-F .
129	1 610 910 085	Needle-Roller Bearing .
137	1 610 591 015	Plug .



Sơ đồ máy GSH 11E

138	1 611 015 043	Sealing Frame .
139	1 610 290 036	Sealing disk .
141	1 610 290 028	Rotary shaft lip seal .
142	1 610 300 063	Bushing .
143	1 614 601 021	Retaining ring DIN 7993-28x2 .
144	1 610 190 028	Supporting Disc .
153	2 916 660 007	Spring retaining ring DIN 472-22x1MM .
154	2 916 660 040	Spring retaining ring DIN 472-68x2,5MM .
155	1 614 601 020	Retaining ring .
156	2 916 650 003	Spring retaining ring DIN 471-12x1-FSt .
160	1 610 210 132	O-Ring 45,0x6,0 MM .
161	1 610 290 031	Damping Ring .
162	1 610 210 133	O-Ring 28,0x5,0 MM .
163	1 610 210 134	O-Ring 62,0x3,0 MM .
164	1 900 210 117	O-Ring 18x3 MM .
165	1 610 210 096	O-Ring 21,0x3,5 MM .
166	1 610 210 084	O-Ring 34,0x2,0 MM .
167	1 610 283 026	Rotary shaft lip seal .
170	2 914 551 117	Microencapsulated Screw DIN 912-M 5x12-8.8 .
171	2 910 141 158	Hex Socket Head Cap Screw DIN 912-M5X16-8.8 .
172	1 613 414 021	Microencapsulated Screw .
173	1 613 433 001	Screw and washer assembly 6,3x32 .
174	1 613 435 010	Torx Oval-Head Screw 5,5x25 .
661	1 615 430 010	Grease Tube 30 ML .
803	1 614 011 072	Armature 220-240V .
805	1 617 000 723	Power supply cord .
808	1 601 106 032	Nameplate 26x52 MM .
837	1 617 000 294	Control Bushing .
840	1 617 000 992	Impact Mechanism Housing .



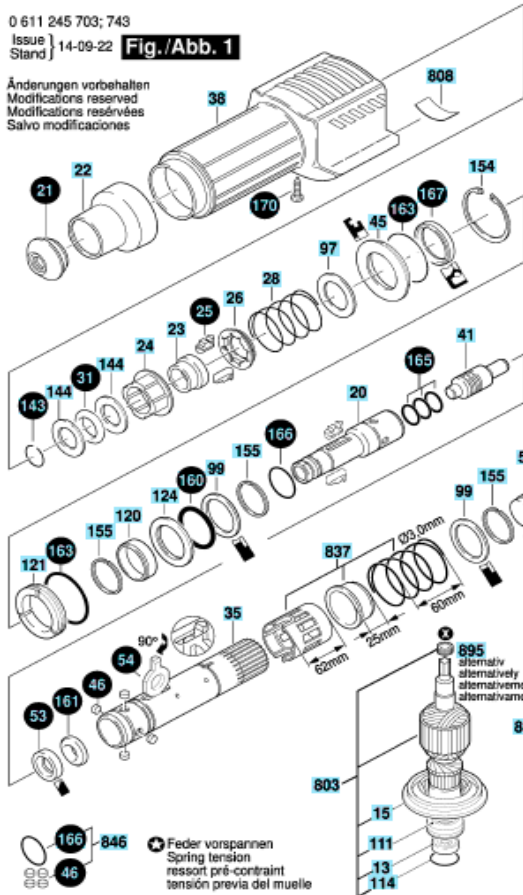
Sơ đồ máy GSH 11E

842	1 600 A00 5AF	Brush Holder .
842/020	1 614 336 017	Brush Guide .
842/030	1 614 652 004	Spiral Spring .
842/050	1 617 014 126	Carbon-Brush Set .
850/050	1 607 000 481	Carbon-Brush Set 10 x 1 617 014 126 .
842/080	2 910 611 012	Tapping Screw DIN 7981-ST3,5x16-C-H .
846	1 617 000 241	Cylindrical Roller .
849	1 617 000 991	Control Fork .
860	1 617 000 993	Spur Wheel Clutch Z=53 .
872	1 617 000 994	Eccentric Cog Wheel Z=50 .
884	1 612 025 043	Auxiliary Handle .
887	1 617 000 807	Clamping Band Ø87 MM .
890	1 615 430 015	Grease Tube 225 ML .
891	1 615 430 014	Grease Tube 45 ML .
893	1 615 430 020	Grease Tube 225 ML .
892	1 613 001 008	Depth-Gauge SW 6x330 MM .
895	3 613 344 500	Oil Return Ring .
897	1 617 000 224	Wear and Tear Part Set .
898	1 617 000 225	Wear and Tear Part Set .

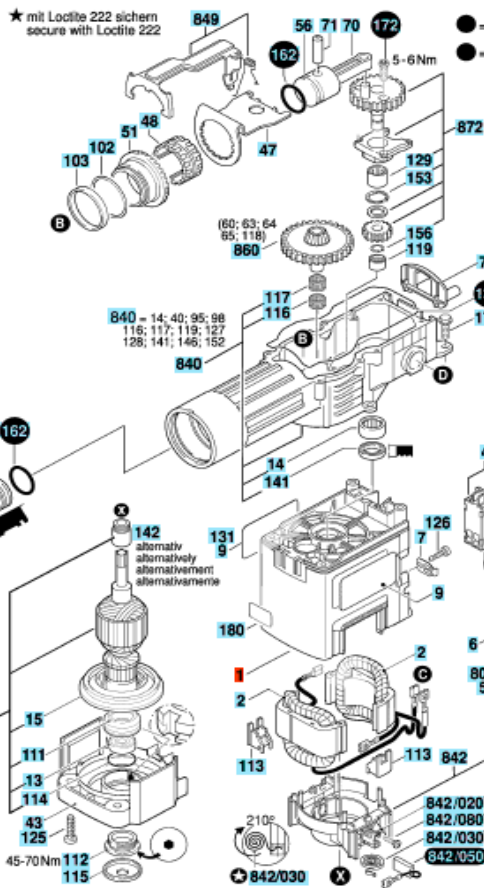
Sơ đồ máy GSH 11E

0 611 245 703; 743
Issue
Stand 14-09-22 **Fig./Abb. 1**

Änderungen vorbehalten
Modifications reserved
Modificacions reservades
Salvo modificaciones

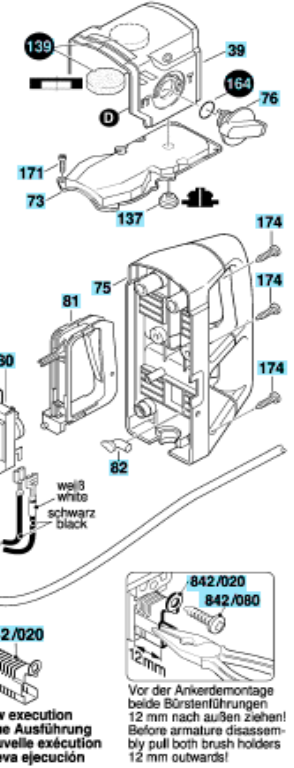


★ mit Loctite 222 sichern
secure with Loctite 222



● = Pos. 897 1 617 000 224 ohne Fetttube
1 617 000 224 without grease tube
● = Pos. 898 1 617 000 225 mit 3 Fettuben à 45ml
1 617 000 225 with 3x 45ml grease tubes
Bitte Schmierhinweise beachten!
Please note lubrication instructions!

1 619 973 158



⚙ Feder vorspannen
Spring tension
ressort pré-contraint
tensión previa del muelle

842/020
842/080
New execution
Neue Ausführung
Nouvelle exécution
Nueva ejecución

842/020
842/080
Vor der Ankerdemontage
beide Bürstentführungen
12 mm nach außen ziehen!
Before armature disassembly
pull both brush holders
12 mm outwards!